



川とともに生きるまち  
shimanto  
四万十市  
The Town that Lives with the River  
Shimanto City

Shimanto City Awesome People

Awesome Shimanto City People!

Didn't we just meet?

四万市 高知県  
しまんとし  
公式観光パンフレット  
Shimanto City, Kochi Official Tourist Brochure



川とともに生きるまち  
shimanto  
四万十市  
The Town that Lives with the River  
Shimanto City

Shimanto City Awesome Nature

Awesome Shimanto City Nature!

See. Play. Shimanto River

四万市 高知県  
しまんとし  
公式観光パンフレット  
Shimanto City, Kochi Official Tourist Brochure





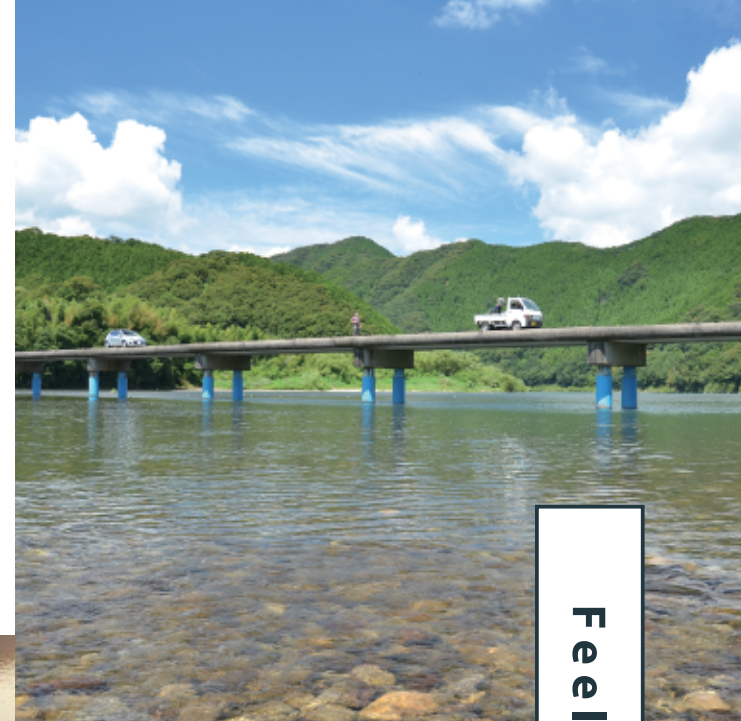
## Play



## Taste



The nurturing Shimanto River.  
Take a seat on the river banks and  
enjoy the changing seasons and  
healing comfort of the river



## Feel

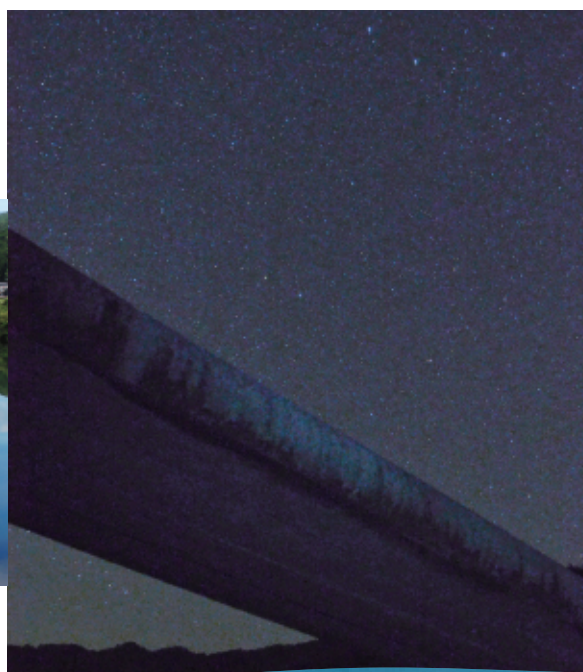


The gentle-flowing, magnificent  
Shimanto River. Play to your heart's  
content, or simply peer into the  
water. Forget the stress of everyday  
life and have a luxurious time

## See



Take a look at the mirror-like  
surface of the river. Watch the  
fireflies buzzing around. Admire  
the stars dotting the night sky like  
a crown jewel. That's the beauty  
fostered by the Shimanto River



Enjoy the local delicacy,  
Nakamura Katsuo Tataki made  
with the juice of the bushukan, a  
citrus fruit first grown in the  
Shimanto-area

This town is often called Little  
Kyoto. When the Lord Ichijou  
Norifusa came to the area from  
Kyoto, he imprinted much of the  
capital's culture onto the land.  
Please experience this unique  
culture for yourself!



## Experience



## This is just place I was looking for!

The Shimanto river flows through Kochi  
prefecture and has a total length of 196km.  
Enjoy the magnificent and idyllic scenery of  
Japan's last clean river. You are guaranteed to  
have a wondrous experience. After enjoying the  
river, discover the warmth of the people.

You will find yourself talking to people you just met as  
if you were old friends. Shimanto is sure to become your  
second hometown.

You might come to see the river but will be pulled in by  
the endless charm of the town. You'll think, I wish I had  
come here sooner

*Awesome Nature & People!*  
*Welcome to Shimanto City*

### Shimanto City Tourism Association

8-3, Ekimaecho, Shimanto City 787-0014

☎ 0880-35-4171

<https://www.shimanto-kanko.com>

### Accessibility

- Approximately two hours and  
30 minutes by car from Kochi Ryoma Airport
- Approximately two hours by train  
from Kochi Station

MAP

