

Shimanto City Travel Guide

Stream of Dreams

The Shimanto River



Shimanto City, Kochi, SHIKOKU



Ten Million Rape Flower Forest (Willow Grove in Nyuta)



Kuroson Gorge



Sada Chinkabashi Bridge



Misato Chinkabashi Bridge

Beautiful flower spots "Shimantogawa Hanakikou" Flowers of the four seasons blossoming by the clear stream



Rapeseed Flowers

Best Time to See early March to late March
Location Willow Grove in Nyuta
This 2km stretch of natural willow forest is carpeted with bright-yellow rapeseed flowers.



Wisteria

Best Time to See late April
Location Kusanji Wisteria Park
At Kusanji Temple, also known as Shimino Mori (people's forest), wisteria flowers from all over the world are showcased, a sight to soothe the heart.



Hydrangea

Best Time to See early June
Location Yasunami Waterwheels
The waterwheels are surrounded by hydrangeas of blue, light pink, and violet, adding still more charm to the rural scenery.



Cherry Blossoms

Best Time to See mid-March to early April
Location Tamematsu Park
One of the finest displays of cherry blossom. During the festival lanterns are lit so the blossom can be viewed after dark.



Water Lilies

Best Time to See early May to mid-October
Location Dragonfly Nature Park
Every morning, three thousand colourful water-lilies open to delight visitors.



Red Spider Lilies

Best Time to See late September
Location Willow Grove in Nyuta
Red spider lilies in vivid bloom along the Shimanto River are truly breathtaking.



Azalea

Best Time to See mid-April to late April
Location Nishitosa Kuki
Come to the Nishitosa Kuki region and try various fun activities: viewing azaleas and chinkabashi bridges, picking wild vegetables, and fishing for "Amego" (red-spotted masu trout) around the basin of the Kuroson, a tributary of the Shimanto River.



Japanese Iris

Best Time to See late May to early June
Location Dragonfly Nature Park
Ten thousand irises bloom amid a rural forest landscape, recalling a time when scenery like this was common everywhere.



Autumn Leaves

Best Time to See early November to mid-November
Location Kuroson Gorge
The Kuroson River, one of the clearest tributaries of the Shimanto, has been selected as one of Japan's 100 Most Exquisite and Well-Conserved Waters. Its upper reaches flow through a forest of Bunko (Japanese beech), and a gorge where autumn leaves, reflected in the clear waters, produce a breathtaking sight.



Opening of the sweetfish (Ochi Ayu) season

December 1
For conservation reasons, fishing of Ochi-Ayu (sweetfish) is not allowed before December. This opening day of the season attracts fishermen from inside and outside Kochi Prefecture to the Shimanto River.



Glass-eel fishing

early December to early March
Small boats ply the darkened waters at the Shimanto River mouth. Enjoy the beautiful symphony of their lights on a cold winter night.



Harvesting Green Seaweed on the Shimanto River

early December to late March
The green seaweed picked near the river mouth is said to be the best in Japan in terms of aroma, colour and taste. This traditional activity is a winter attraction of the region.

Principal Events in Shimanto



Shimantogawa Riverside Full Walk

1st Saturday and Sunday of April
Enjoy the delights of springtime with a stroll along the beautiful clear Shimanto River, especially pleasant if the rape flowers are still in bloom. This walk has become a seasonal tradition with various walking courses and plans available.



Shimanto River Swimming Marathon

last Sunday of July
The only swimming marathon in Japan. Participants can choose from two courses, depending on their fitness. How about swimming with sweetfish in the Shimanto River?



Shimanto Firework Display

last Saturday of August
This event is viewed from the city center, with fireworks launched from the riverbed at the foot of the Red Iron Bridge. The magnificent display is reflected from the river surface, lighting up the night skies over "Little Kyoto".



Tachibana portable shrine river crossing

October 29
The resident deity of Shiroyiwa Shrine is carried across the river to Yasaka Shrine of the Tachibana district, where traditional rituals are carried out, then returned home next day.



Tosa Ichijo Family Procession (Wisteria Festival)

May 3
Local people re-enact a historic scene, the entry of former ruler Norifusa Ichijo into Nakamura to take up his office. With "gagaku", the ancient Japanese court music, playing in the background, 200 people dressed in Muromachi Period robes parade through the streets of "Little Kyoto of Tosa".



Spider Sumo Tournament

1st Saturday of August
Once a game for women of the imperial court, today spider-sumo is a regular summer event here. Over 100 spiders fight in the tournament while local children enjoy the fun. Tourists are welcome to come and take part – your own special spider is waiting for you!



Fuba Hachiman Shrine Festival

mid-September
In this unique "wedding ceremony", a portable shrine with the goddess of Ikku Shrine (the bride), crosses the river to exchange betrothal gifts with the god of Fuba Hachiman Shrine (the groom) and perform a ceremony. This holy marriage is carried out in the old traditional way by clashing the portable shrines against each other.



Autumn Festival in Hage (Hanatori-dancing and Ushi-oni)

November 8
Ushi-oni (grotesquely masked) figures and portable shrines process across the chinkabashi bridge and back escorted by young dancers and children. Afterwards dances are performed on the grounds of Hage-Tenmangu Shrine.



Shimanto Civic Festival (Dancing and lantern float parade)

last Saturday of July
In Nakamura Summer starts with Nakamura odori-dancing and lantern floats parading down the streets.



Daimonji Okuribi (Great Bonfire Event)

July 16 (in old lunar calendar)
This spectacular bonfire at Mt. Judaiji (in Masaki), a major local attraction, symbolises the end of summer for "Little Kyoto" Nakamura.



Kokkiriko-dances in Yamachi

mid-October
A local custom, passed down from the Edo Period. This traditional dance, using two poles, has been designated an Intangible Folk Cultural Property by Shimanto City.



Konpira Festival (Itsushika "Five-deer" dancing)

4th Sunday of November
Watch a unique dance dedicated to the gods, a children's tradition, passed down from one generation to the next. Nishigaho, where Konpira Shrine is located, is surrounded by fine scenery and all the richness of nature.



Iwama Funayusan

4th Sunday of July
In the Summer festival of Iwama tmangu shrine, boats with a portable shrine are carried across the river to Kayo district, where traditional rituals are carried out, then they go under the Iwama chinkabashi bridge to the opposite shore.



Ancestor Memorial Service in Gontani

August 15
A Buddhist Obon service in honour of deceased ancestors, held since around 1665, with torchlit incantations on the riverside to the accompaniment of bells and drums. Prayers are offered for those who have died in the last year and food is offered to the gaki (hungry spirits).



Shimantogawa Ultra Marathon

mid-October
One of Japan's major ultramarathon events, this road-race in the Shimanto River valley takes place over two courses, one of 60km and one of 100km.



Ichijo Festival

November 22 to 24
Dating back to 1862 when the Ichijo Shrine was constructed, the festival has been celebrated on a grand scale ever since, with children's processions and various other festivities.

Relax amid the idyllic pastoral setting of the Shimanto valley,
which has hardly changed in centuries.

Boat Tours on the Shimanto River

Enjoy the beautiful scenery of the Shimanto River valley, breathe the sweet clear air and see interesting sights such as traditional fishermen at work. Boat tours, including the traditional white-sailed Senba-boats, are operated on a regular timetable and boats can also be chartered for private hire. Tours including a meal on board are also available by reservation only.

Regular Tours: Depart every other hour.

On demand tours: Boats can depart at any time – it's best to book in advance.

Fares: Adults 2,000 yen (Senba 2,500 yen) Children (7-12 years) 1,000 yen (Senba 1,250 yen)

Please note: Tours may be cancelled due to bad weather. For further information, please contact Shimanto City Tourism Association.

1	Canoe Kan	☎ 0880-52-2121	1111-11 Nishitosa Mochii, Shimanto City	Reservations required
2	Iwama Boat Tour	☎ 080-6284-3478	39 Nishitosa Iwama, Shimanto City	Reservations required
3	Nattoku	☎ 0880-38-2918	846-1 Tadenokawa, Shimanto City Regular tours from 8:00AM (April to September) or from 9:00AM (October to March)	
4	Shimanto no Ao	☎ 0880-38-2000	1446 Misato, Shimanto City Regular tours from 9:00AM One-way shuttle service to or from dock available with reservation (min 2 passengers)	
5	Sakoya	☎ 090-5147-4023	The foot of the sada chinkabashi bridge, Sada, Shimanto City	On demand tours
6	Senba Roman Matsuiroya	☎ 090-9458-3644	2-1 Nyuta Heimoto, Shimanto City	Regular tours

For the location of each tour company, refer to the Shimanto River Leisure Map on Pg.11-12.



A Canoe Kan (canoeing and camping)

Half or full-day canoeing courses for all levels including beginners. An exhibition of canoes from all over the world. Shimantogawa Ring-ring Cycle offers bike rental.

Address 111-11 Nishitosa Mochii, Shimanto City

TEL 0880-52-2121 **FAX** 0880-52-2424

Hours 8:30-17:30

Bike rentals 8:30-17:00

Closed January 1 - 3

<http://www.canoeikan.com/>

E-mail: info@canoeikan.com



Hirano, Futami Surfing Beaches

These popular surfing beaches are 5 min by car from the entrance of the Tosa Seinan Great Park. Surfers from around Shikoku and all over Japan gather here to catch the best waves.



Kosanji Wisteria Park

The public park surrounding Kosanji Temple is an ideal place for hiking and enjoying forest nature. The temple itself is associated with the famous monk Kobo-Daishi, and its observation tower gives a panoramic view of the Shimanto River and the city. In the spring, approximately 20 out of 32 species of wisteria from all around the world are in glorious bloom.

Address 974-1 Sakamoto, Shimanto City

Hours March 16 to September 30 9:00-18:30,
October 1 to March 15 9:00-16:30



B Shimanto Gakusya

Stay in an old converted school and take courses in activities such as rafting, canoeing, and snorkelling. Further courses are available allowing you to experience fishing, farming and forestry. Also suitable for group retreats, school trips, outdoor recreational activities and many other purposes.

Address 408-1 Nishitosa Nakaba, Shimanto City

TEL 0880-54-1230 **FAX** 0880-31-9788

Closed every Wednesday, and from December 28 to January 4 (Open 7 days a week; from the end April to early May; from July to September)

<http://www.gakusya.info/>

E-mail: shimantogakusya@gmail.com



Ichijo Tsurui Park

Flowing through central Nakamura, the water of this manmade stream is drawn from the Shimanto River. Ichijo Tsurui Park, located along the waterway, is an elegant Japanese style garden for rest.

Address Koshomachi Nakamura, Shimanto City



Yasunami Waterwheels

An ancient canal (The Channel of the Four Villages) was constructed by Kenzan Nonaka to bring water to the fields. Waterwheels of various sizes, set along its banks, deliver water from the canal to the rice paddies, a homely, nostalgic scene. (The wheels are not always in operation, dependant on the water supply.)

Address Yasunami, Shimanto City



C Kawarakko (canoeing and camping)

Shimanto Canoeing and Camp no Sato (camping grounds) is situated beside the Shimanto River in a rich natural setting. Beginners are welcome to try canoeing. There are 26 camp-units (each with its own sink), canoes for rent, inflatables, bike rentals from Shimantogawa Ring-ring Cycle, shower facilities, locker rooms and laundromats. Overnight stays: Checkin 15:00, checkout 13:00. Short stays between 10:00-16:00.

Address 24 Tadenokawa, Shimanto City

TEL 0880-31-8400 **FAX** 0880-31-8401

Closed Mondays October 1 to June 30 (Tuesday if Monday is a public holiday). Open every day July to September.

<http://www.kawarakko.com/>



Shimantogawa Camping Grounds

Located upstream from the Shimantogawa Bridge (Red Iron Bridge) on the Gudo side. No charge for camping here, water supply and toilet cubicles provided.

Give requests to ■ Shimanto City Park Management Office

TEL 0880-37-0608



F Motor campsite "Tomarotto" Tosa Seinan Great Park

A fully equipped motor campsite near the Shimanto River mouth, overlooking the Pacific Ocean. First-time campers welcome! 22 cabins, 5 "tengalow" units, 47 tent sites. Facility block with snack bar, coffee shop, laundromat and shower facilities, a sports hall, three kitchen areas, barbecue sites, toilets, showers, outdoor theatre and playground.

Address 3548 Shimoda, Shimanto City

Hours from 8:00 to 21:45

TEL 0880-33-0101 **FAX** 0880-33-0202

■ Open everyday

<http://www.tomarotto.com/>

E-mail: camp@tomarotto.com



For the location of each river activity company, refer to the Shimanto River Leisure Map on Pg.11-12.

Discover the long and rich history th


Nakamura ‘Little Kyoto of Tosa’

-A “Little Kyoto” that is closely associated with the Ichijo Family-

About 550 years ago, Lord Ichijo left Kyoto for the Tosa region to avoid the Onin War. The Ichijos modelled their new capital on Kyoto using a grid design and gave the streets famous names such as Gion, Kyomachi, Kamogowa, and Higashiyama; therefore, this area came to be called the "Little Kyoto of Tosa". In the year 1600, lord Yasutoyo Yamauchi; little brother of Kazutoyo Yamauchi ruled this region, and later it became Nakamura Domain (3,000 koku). Even today traces remain all over Shimanto City of the Ichijo Family heritage and the later rule of the Yamauchi family during the Edo period. Stroll through these historic streets and visit the many ancient sites.




Daimonji Okuribi (Great Bonfire Event)
July 16 (in old lunar calendar)



Ichijo Festival (November 22 to 24)

History of the Ichijo Family

Norifusa Ichijo moved from Kyoto to take possession of Hata Manor (the present Shimanto City) in 1468. He was succeeded by Fusaie Ichijo, his second son, who built a new town here modelled on Kyoto. For the next 106 years, the Ichijos ruled this region as court nobles.



Lord Fusaie Ichijo

“Little Kyoto” is the nickname given to cities which were so named for how their town planning, old streetscape, and taste resemble Kyoto. There is a “National Conference of Little Kyoto” where cities which are referred to as Little Kyoto get together. It lays down 3 conditions to join. Shimanto City brilliantly meets all 3 conditions.

-
- The diagram illustrates the lineage of the Ichijo Clan, starting with Kanera Ichijo at the top. A vertical line connects Kanera Ichijo to Norifusa Ichijo (1423-1480). To the right of Norifusa Ichijo is a box stating: "Moved from Kyoto. The founder of Tosa Ichijo Clan." Below Norifusa Ichijo is Fusaie Ichijo (1475-1539). To the right of Fusaie Ichijo is a box stating: "First generation of Tosa Ichijo Clan". To the left of Fusaie Ichijo is Princess Tamahime (married in 1521 - 1547). Below Fusaie Ichijo is Fusafuyu Ichijo (1498-1541). To the right of Fusafuyu Ichijo is a box stating: "Second generation of Tosa Ichijo Clan". Below Fusafuyu Ichijo is Fusamoto Ichijo (1522-1549). To the right of Fusamoto Ichijo is a box stating: "Third generation of Tosa Ichijo Clan". Below Fusamoto Ichijo is Kanesada Ichijo (1543-1585). To the right of Kanesada Ichijo is a box stating: "Fourth generation of Tosa Ichijo Clan".
- ```

graph TD
 Kanera[Kanera Ichijo] --> Norifusa[Norifusa Ichijo
(1423-1480)]
 Norifusa --> Fusaie[Fusaie Ichijo
(1475-1539)]
 Fusaie --> Fusafuyu[Fusafuyu Ichijo
(1498-1541)]
 Fusaie --- Tamahime[Princess Tamahime
(married in 1521 - 1547)]
 Fusafuyu --> Fusamoto[Fusamoto Ichijo
(1522-1549)]
 Fusamoto --> Kanesada[Kanesada Ichijo
(1543-1585)]

```
- Family Tree of the Ichijo Clan**
- Kanera Ichijo**
    - Norifusa Ichijo (1423-1480)**

Moved from Kyoto. The founder of Tosa Ichijo Clan.
    - Fusaie Ichijo (1475-1539)**

First generation of Tosa Ichijo Clan

      - Princess Tamahime (married in 1521 - 1547)**
      - Fusafuyu Ichijo (1498-1541)**

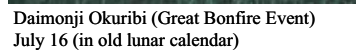
Second generation of Tosa Ichijo Clan

        - Fusamoto Ichijo (1522-1549)**

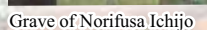
Third generation of Tosa Ichijo Clan

          - Kanesada Ichijo (1543-1585)**

Fourth generation of Tosa Ichijo Clan



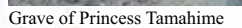
Norifusa Ichijo moved from Kyoto to take possession of Hata Manor (the present Shimanto City) in 1468. He was succeeded by Fusaie Ichijo, his second son, who built a new town here modelled on Kyoto. For the next 106 years, the Ichijos ruled this region as court nobles.



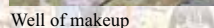
This former chief advisor to the Emperor moved from Kyoto to Nakamura to avoid the Onin war (1467-1477). Norifusa worked to develop the Nakamura area into the commercial center of the region until his death in 1480 at the age of 58. Myogegi Temple, his family temple, is thought to have been close to where Nakamura high school stands today.



A nationally designated important cultural property, built between 1469-1487 by Lord Ichijo. This guardian shrine is an offshoot of Iwashimizu Hachiman Shrine in Kyoto. The shrine is a fine example of Muromachi Period architecture, featuring a main hall roofed with wooden shingles and built in the Sangensha Nagarezukuri style. Don't miss this outstanding remnant of medieval Japan.

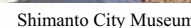


The daughter of Fushimino-no-miya kunitaka, an Imperial prince. Princess Tamahime came to Tosa in 1521 to marry Fusafuyu Ichijo chief of the Tosa-Ichijo Family. Tamahime continues to be admired by locals in Nakamura. For instance, because Tamahime's marriage and death fell on June 22nd and August 22nd respectively, the ladies shopping district association made the 22nd day of each month, 'Tamahime day'.



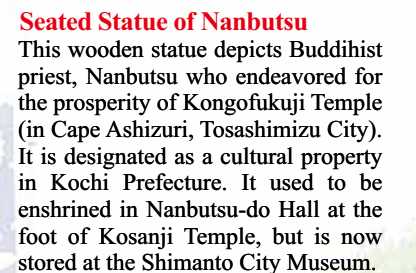
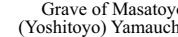
Built in 1862 in honor of Tosa Ichijo, founder of the culture and economy of Nakamura district. Inside the grounds of this shrine are the kesho no ido and other mementoes of Lord Ichijo.

Four castles were built at different times on the peak of Mt Tamematsu but little remains of them. The ruined stone walls, discovered in 1965, are thought to date from 1613, when Masatoyo Yamachi ruled here.



A museum built in the style of a traditional castle, located in the ruins of Nakamura Castle (Tamematsu Park) containing many precious exhibits such as the Seven Star Sword (below), items related to the Ichijo family, and personal effects of Shusui Kotoku. The tower gives a panoramic view of the Shimanto River and the city. Tamematsu Park is also a good place for viewing cherry blossom. In 2019, it reopened with new exhibits about the history of the city's connection to the Shimanto River.

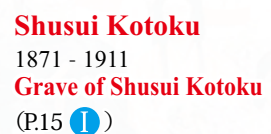
Open: 9:00-17:00 (Last admission 16:30)  
TEL 0880-35-4096  
Closed: Wednesdays



Second generation lord of the Nakamura-Yamauchi clan, Masatoyo died in 1629. He was buried near the old Myoinji Temple, in modern-day Kamikoshomachi. The temple is now gone, but the grave remains on the mountainside.



Built from 1352 to 1356 by the noble priestess, Kaiho Shoko with the help of Sengen Kakuun who made the famous Shikoku Pilgrimage. Seated statues of these two are considered to be masterpieces from the Muromachi Period, and are Nationally Designated Important Cultural Properties (NDICP).



Born to a wealthy merchant's family of Nakamura. Shusui was a bright student and in 1887 he moved to Tokyo to study under leading political figures. He worked as a newspaper correspondent and became an active member of the socialist movement, publishing several books such as :Shakai Shugi Shinzui:(The Essence of Socialism).In 1911,he was executed on suspicion of involvement in a plot to assassinate the Emperor, but in recent years, Susui's socialist ideologies have become more respectable and it is now thought he played no active role in the plot. In December of 2000, Nakamura City Assembly recognized the injustice by making the official Resolution to Honor Shusui Kotoku. Every year on the anniversary of his death a memorial service is held at his grave.



Shinkichi Higuchi was born in Hata county of Nakamura, the son of a common soldier. He travelled widely, and became expert in Japanese fencing, also learning archery, and gunnery. At 24 he returned to Nakamura to open a martial arts school with over 1000 students. Later Shinkichi served as an official in local government. A leader of the Kinnoto Confederation, a traditionalist movement in the west of Tosa, he argued for restraint. In 1868 he fought in the Boshin War which overthrew the shogunate and restored power to the Emperor. He subsequently held high offices in the national government in Tokyo where he died at the age of 56.





Water lily pond and Crocothemis servilia mariannae

## “Dragonfly Kingdom” (Tombo Okoku) Shimanto City Dragonfly Nature Park -Dragonfly Sanctuary with Flowers Special features in the Four Seasons-

### 1. The world's first dragonfly sanctuary

The sanctuary was founded at Ikedatani in the outskirts of Shimanto in 1985 by local citizens.

### 2. The largest number of dragonfly species in Japan

77 distinct species have been observed across the 50 hectare sanctuary.

### 3. Beautiful flowers show up in each season

A variety of bright and beautiful flowers bloom in the sanctuary from season to season, including water lilies and the Japanese iris.

## 3 Best Things to Do in Dragonfly Kingdom

### 1. Dragonfly watching

Dragonflies may be observed and pictured at the sanctuary most times of the year, mainly from mid-March to late December.

### 2. Enjoy viewing flowers

The rabbit-ear iris may be seen during Golden Week, the iris in early summer, and the water lily throughout the summer season. The arrays are stunning!

### 3. Hands-on experiences

The park is home to a mini-aquarium and features a creature scavenger hunt where students of nature may learn about the different animals living in the area, among various other activities. On the last Sunday of July, a parent-child firefly catching contest is held.

*\*The activities are geared towards establishing dragonfly parks as relaxing places.*



Japanese iris



Creature Scavenger Hunt



Anax parthenope



Fishing crayfish



Rhyothemis fuliginosa

## “Shimantogawa Gakuyukan” (Akitsuio) -Dragonfly Museum and Mini Freshwater Aquarium-

## 3 Best Things to Do at Shimantogawa Gakuyukan

**1. Enjoy the worldwide insect exhibits**  
5000 insect specimens consisting of 2500 distinct species are on display, including 3000 dragonflies of over 1000 species.



Dragonfly museum

### 2. Get to know the Shimanto River by learning about the habitat distributions of local fish

There are over 130 local fish species across the fresh and brackish portions of the river that illustrate the unique environment.



Mini freshwater aquarium



Killifish scooping



Serpentinite

### 3. Hands-on experience

Along with guessing games that are perfect for school trips and groups of children, there are many activities for families and individuals to try, including killifish scooping, a quiz with prizes from the park, a dragonfly photo contest, serpentinite rock polishing and a handmade dragonfly cellphone strap making corner.



**Hours** 9:00-17:00 **Parking lots** Available  
**Closed** Mondays (open on national holiday Mondays and closed on following Tuesdays)  
Open every day during Spring holidays, Golden Week, Summer and Winter holidays.  
**Admission** Adults (over 18) 880 yen, Groups 700 yen  
Junior high and high school students 440 yen  
Groups 350 yen  
Children (over age 4 and elem. school students) 330 yen, Groups 260 yen  
(\* A group must have 20 or more members)



Shimanto Iyashi no Sato



Restaurant



Hot springs・medicinal bath



Open-air, seawater bath

## Shimanto Iyashi no Sato

Set on a hill in Tosa Seinan Great Park. The hillside nearby has a wonderful view of the clear Shimanto River as it flows out into the Pacific. Inside the village is a bathing area, "Shimanto Iyashi no Yu" and "Restaurant Sanzenkai", with an eco-conscious design, this is a stimulating, healthy place to stay.

**Address** ■ 3363 Shimoda, Shimanto City  
**TEL** 0880-31-5111

**FAX** 0880-31-5112

**http://www.shimanto-iyashinosato.com**

## Restaurant Sanzenkai

As well as the many fruits of Japan's last clear river, the Shimanto, this restaurant serves dishes carefully prepared with all the best seasonal produce, from the surrounding mountains and from the waters of the Pacific Ocean. The restaurant uses only highest quality organically-grown ingredients – not only delicious but also healthy and nutritious.

**TEL/FAX** 0880-31-5811

**Hours** ■ Lunch 11:30-14:00,

Dinner 17:00-21:00

(Last orders 20:30)

*\* Restaurant business hours are subject to change.*

## Shimanto Iyashi no Yu

In addition to the hot springs bath, you can bathe in the herbal medicine bath, the infra-red heated sauna, and bathe outdoors in seawater pumped up from the Pacific Ocean. Unwind, feel nature's breeze on your skin and enjoy yourself to the fullest!

**Business hours** ■ April to October 6:00-22:00

November to March 6:30-22:00 (Last admission 21:30)

**Admission** ■ Adults 690yen, Children (under 16) 350yen

*\* For a group with more than 20 persons, a group discount rate will apply.*

After bathing, relax to the sound of chirping birds and ocean waves in "Iyashi no Ma", the healing room or try "Nagomi no Ma" with its under-floor charcoal. Also try the "Shin no Ma" for a physical check-up, and the "Taikyoku no Ma", "Ki no Ma", and "Manabi no Ma" where you can learn Tai Chi and Qigong breathing techniques. Everything here is designed to cure your ills and banish your fatigue.



Hotel Seira Shimanto

## Hotel Seira Shimanto

Set on a hill overlooking the Shimanto River, this hotel is surrounded by the beauty of nature. Specialities served in the restaurant include sweetfish and shrimps from the Shimanto River, grilled local beef -shimanto gyū-, and the abundant natural ingredients from all around the region.

**Address** ■ 1100 Nishitosa Mochii, Shimanto City

**TEL** 0880-52-2225 **FAX** 0880-52-2004

**Hours** ■ 7:00-9:00, 16:00-22:00

On Saturdays, Sundays, and public holidays, hotel's bathing area is also open between 11:00 and 14:00.

**Admission** ■ Adults 800yen, Children (under 13) 400yen

**Restaurant** ■ 8:00-21:00 (Last orders 20:15)

**http://www.seirashiamnto.com/**

**E-mail:** mail@seirashimanto.com



Restaurant



Hot springs

## Shimanto Celestial Observatory

Nishitosa area has always been famous for its clear, star-studded skies. It used to be designated by the Ministry of the Environment as the 'City with Starlit Sky'. The celestial observatory reopened in 2013, and its 4-metre observation dome has 36-centimeters reflecting telescope. Astronomers on location can be your guides to the stars. (As a general rule, reservations required a day before preferred date of application)

**Address**

■ 1101-5 Nishitosa Mochii, Shimanto City

**TEL** 0880-52-2225

**Hours** ■ 20:00-21:00 (once a day)

**Closed** ■ Wednesdays

**Capacity** ■ 10 at a time

**Admission**

■ Adults 520 yen, Children (7-15) 300yen

## Country Life Experience Center House of Minehage, etc.

A set of various traditional houses in the Nishitosa area that can be rented by families or groups. These houses have been renovated along with kitchen facilities so that visitors can enjoy their stays in comfort. Rent a house and experience the country life.

**Contact:** Canoe Kan

**TEL** 0880-52-2121 **FAX** 0880-52-2424



Shimanto Celestial Observatory









**G Sada Chinkabashi Bridge**

Chinkabashi (Submersible Bridge) is a bridge without handrails, designed to submerge in a flood. This is the longest and furthest downstream of 48 submersible bridges on the Shimanto River system. Nine of these, including Sada, are in Shimanto City.

**H Ichijo Shrine**

Constructed by volunteers at the site of the Ichijo family mausoleum in 1862, in honour and remembrance of the Ichijo family, who made a great contribution to the economic and cultural development of Nakamura (now Shimanto City).

**I Shimanto City Museum**

Built in the style of a traditional castle and located in the ruins of Nakamura Castle, the museum offers panoramic views of the city center and Shimanto River.

**J Yasunami Waterwheels**

Chief retainer Kenzan Nonaka constructed an irrigation system in the Edo Period with many waterwheels along the banks to draw water into the paddy fields. These are no longer used, but some new ones have been built to show how they work. In June hydrangea blooms give the area a peaceful, countryside appeal.  
Best Time to See [Early Jun.-late Jun.]

## The Shimanto Trolley Bus

The Shimanto Trolley Bus, convenient for city sightseeing is in operation. All day ride tickets available for 500 yen a day (elem. school and under 250 yen; infants free). Recommended for sightseeing within the city.

Service days: Golden week, Summer and Winter holidays, (Saturdays, and Sundays only in March)

Bus stops: Nakamura station, apia Satsuki, Shimanto City Hall, Shin Royal Hotel Shimanto, Sada Chinkabashi Bridge, Shimanto City Museum, Ichijo-dori 2-chome, Nakamura Prince Hotel, Dragonfly Nature Park

🚲 **Bikes can be picked up and returned at any terminal.**

**Enjoy sightseeing on the Shimanto Trolley Bus!**

【Mountain Bike rental fees】 【Bike terminals (pick-up/drop off points)】  
Up to 5 hours: 1,200 yen • Shimanto City Tourism Association • Nakamura Prince Hotel  
All day (24 hours): 1,700 yen • Shin Royal Hotel Shimanto • Dragonfly Nature Park



**B Sakura Zutsumi (Cherry Blossom Viewing Point)**



**C Field of Rape Flowers**

**I Shimanto City Museum**  
**H Ichijo Shrine**  
**I Shimanto City Hall**

**E Shimantogawa Bridge (Red Iron Bridge)**

**F Fuba Hachiman Shrine**

## KIMONO Rental 「KIMONOLOILOI」

Walking about "Little Kyoto" dressed in a beautiful KIMONO.  
May. -Oct. /YUKATA  
Nov. -Apr. /KIMONO  
8:30 ~ 16:00  
※Available for men  
● Shimanto City Tourism Association  
TEL 0880-35-4171

## Feel the breeze as you enjoy a relaxing bike ride!

### Bike Rental Information

#### Shimanto River Rental Cycles

Perfect for a four or five hour sightseeing tour, including visits to the Dragonfly Park, Sada Chinkabashi and more!

- City cycle / Mountain Bike**  
Rental fee: Up to five hours: 1,000 yen  
All day (24 hours): 1,500 yen
- Electric-assisted bike (NABICHARI)**  
Rental fee: Up to five hours: 2,000 yen  
※Return by 17:30
- Tandem bike**  
Rental fee: Up to five hours: 2,500 yen  
※Return by 17:30



〈City cycle〉 〈Mountain bike〉



〈Electric-assisted bike〉 〈Tandem bike〉

**Enjoy the ultra-convenient NABICHARI**  
【NABICHARI explained】  
The NABICHARI combines voice navigation and on-screen guidance with motor assistance to offer a convenient bike rental service. Enjoy voice directions and tourist information as you cycle.

#### For long distance along the Shimanto River (Mountain bike) Shimanto River Ring-ring Cycle

Bikes can be rented from and returned to any of the 9 places. Gear up for a wonderful 40 km adventure along the Shimanto River!

Rental fee: Full day (until 17:00) 1,500yen  
24hours (Any 24hr period) 2,000yen  
(Late fee: 200yen/hour)  
Opening hours: 8:30~17:00

**Contact: Canoe Kan**  
**TEL: 0880-52-2121**



- Ekawasaki Staion TEL: 0880-52-1984 (Furusato Annaisyo, Tourist Information)
- Canoe Kan TEL: 0880-52-2121
- Shimanto Gakusya TEL: 0880-54-1230
- Shaenjiri TEL: 0880-54-1477
- Kawarakko TEL: 0880-31-8400
- Shin Royal Hotel Shimanto TEL: 0880-35-1000
- Shimanto City Tourism Association TEL: 0880-35-4171
- Yotte Nishitosa (Road side Station) TEL: 0880-52-1398
- <Shimanto-Cho>
- Shop Towa in Shimanto Town TEL: 0880-28-5115

**D Dragonfly Nature Park**

**B Sakura Zutsumi (Cherry Blossom Viewing Point)**

About 500 cherry trees have been planted along the Shimanto River. In spring you can view the spectacular display of blossom.  
Best Time to See [late Mar.-early Apr.]

**C Field of Rape Flowers**

About 2km of willow groves and fields of rape flowers along the Shimanto River bank. Many tourists come in spring to walk across a yellow carpet beside the blue river as the new willow leaves dance in the breeze.  
Best Time to See [early Mar.-late Apr.]

**D Dragonfly Nature Park Dragonfly Museum and Mini Fresh Aquarium**

The world's first dragonfly sanctuary, protected by the National Trust, with more different species per hectare than any other park in Japan. 77 species can be seen here, from early spring to late autumn.

**E Shimantogawa Bridge**

This bridge, built in 1926, spans the Shimanto River in the center of Shimanto City, about 10km from the river mouth.

**F Fuba Hachiman Shrine**

In the 15th century the Ichijos built this shrine to house deities from Iwashimizu Hachiman Shrine in Kyoto. The honden (main building) is roofed with shingles, and is a classic example of Muromachi period architecture. It is a Nationally Designated Important Cultural Property.

**A Tourist Information Center**

**Tourist Information**  
**Bike Rental**  
**Boat Tour Ticket Office**  
**TEL 0880-35-4171**



# NAKAMURA Map (Nakamura Station Area Map)

## -Accommodation and Restaurants-

When you make a phone call, please press the area code first, then the phone number.

Phone Area Code (0880)

### Accommodations

- 1 (M,Co) Minshuku, Coffee Shop Hoteiya (see next page)
- 2 (H) Shin Royal Hotel Shimanto
- 3 (M) Tabinoyado Jukichi
- 4 (H) Nakamura Daiichi Hotel
- 5 (H) Nakamura Prince Hotel
- 6 (R) Nagomiyado Anjuan
- 7 (H) Business Hotel Ichijo
- 8 (R) Fukuda Ryokan
- 9 (M) Minsyuku Shimantogawa
- 10 (M) Pension Hirano (see next page)
- 11 (H) Hotel Crown Hills Nakamura
- 12 (H) Hotel Shimanto no Yado (see next page)
- 13 (H) Hotel Century Shimanto
- 14 (M) Rental lodge Field (see next page)
- 15 (M) Minshuku Koban
- 16 (M) Minshuku Sakura
- 17 (M) Minshuku Suzu
- 18 (M) Minshuku Tosa
- 19 (M) New Minshuku Nakamura
- 20 (M) Shimanto Riverside (see next page)
- 21 (M) Pension Bee (see next page)
- 22 (M) Kawabe no cottage (see next page)
- 23 (H) Hotel KOKOMO
- 24 (M) Yube Tei
- 25 (M) Minshuku Nakamura
- 26 (H) Hotel Sunriver Shimanto

TEL

- 33-1213  
35-1000  
35-3552  
34-7211  
35-5551  
35-3184  
34-1500  
35-4108  
34-4100  
33-1839  
34-2811  
33-1600  
35-0033  
36-2757  
34-5923  
34-3062  
34-5655  
34-2929  
34-9311  
34-1518  
31-9115  
090-4782-8894  
35-1133  
34-8787  
34-3059  
34-8875

### Restaurants

- 1 (J) Hata's Kitchen
- 2 (J) Ryotei Azuma
- 3 (J) Aya Shokudo
- 4 (J) Ayusen
- 5 (J) Issui
- 6 (J) Inaka
- 7 (J) Sumiya Ippu
- 8 (J) Yamasaki Ryoriten
- 9 (J) Ushiwakamaru
- 10 (J) Norakuro
- 11 (C) Country
- 12 (J) Kushikatsu Kawara
- 13 (J) Kihachi
- 14 (J) Sakoya (see next page)
- 15 (J) Ryosui
- 16 (J) Shimantoya (see next page)
- 17 (J) Jukichi
- 18 (J) Joren
- 19 (J) Sushichi
- 20 (J) Sumibiya
- 21 (J) Senri
- 22 (J) Tairyosushi
- 23 (J) Takumi
- 24 (J) Taniguchi
- 25 (J) Chika
- 26 (J) Choaniki
- 27 (J) Wakamatsu
- 28 (J) Tombo
- 29 (J) Nakahira
- 30 (J) Masamichi
- 31 (J) Hatsuuma
- 32 (J) Hakkenden Shimanto branch
- 33 (J) Hanazen
- 34 (J) Hanami
- 35 (B) Pinocchio
- 36 (J) Shimantogawa
- 37 (J) Shimanto Onsen Heiwa na Yu
- 38 (J) White Castle
- 39 (J) Masudaya
- 40 (J) Masuyama
- 41 (J) Kushisaburo
- 42 (J) Motoya
- 43 (J) Yakunikuya
- 44 (J) Yajirobei
- 45 (J) Kaneki
- 46 (J) Yorimichi
- 47 (C) Coffee Shop Boke
- 48 (J) Iwahan

TEL

- 35-0567  
34-2155  
34-5825  
34-7074  
34-7727  
35-6060  
35-5508  
35-5101  
34-4364  
35-0620  
34-2275  
35-6059  
34-0633  
34-7786  
34-3815  
36-2828  
34-6353  
35-2360  
35-2853  
35-1190  
34-7252  
35-3063  
090-3184-8454  
34-3388  
34-5041  
34-5133  
35-0051  
37-6477  
34-4077  
34-7717  
34-0341  
34-7008  
34-5088  
34-3171  
34-4188  
34-0355  
31-0877  
35-2706  
35-0270  
35-5314  
35-0622  
35-0358  
34-2652  
34-6869  
34-6009  
34-5883  
35-3072  
34-4640

KEY  
H= Hotel  
R= Ryokan  
M= Minshuku  
C= Chinese Food  
B= Bakery  
Co= Coffee Shop  
= Hot Spring

Park Gas Station Bank Shopping Center Convenience Store  
Post Office Toilet Cycle path Laundromat Place of historical interest

### Community Facilities

### Transport

### Emergency Contacts

### Activities

### Car Rental

### Shops

- Shimantogawa Camping Grounds  
Shimanto City Library  
Yasunami Sports Park  
Shimanto City Central Public Hall  
Shimanto City Cultural Center  
Shimanto City Museum

- 37-0608  
35-2923  
34-2071  
34-7311  
35-4887  
35-4096

- Kochi Seinan Transport Service co.(Bus)  
Nakamura Station  
Suzu Hire(Taxi)  
Heiwa Kanko Taxi  
Sukumo Hire Nakamura(Taxi)  
Nakamura Hire(Taxi)

- Shimanto Municipal Hospital  
Nakamura Police Station  
Shimanto Fire Station  
Japan Visitor Hotline  
With RIVER (see next page)

- Toyota Rent a Car West-Shikoku Inc.  
Rent a Car Shimanto

- 34-2126  
34-0110  
34-5881  
050-3816-2787  
49-0119

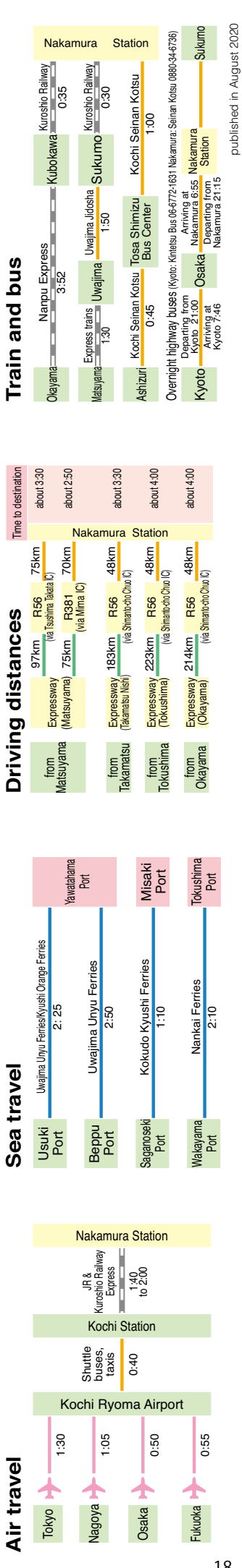
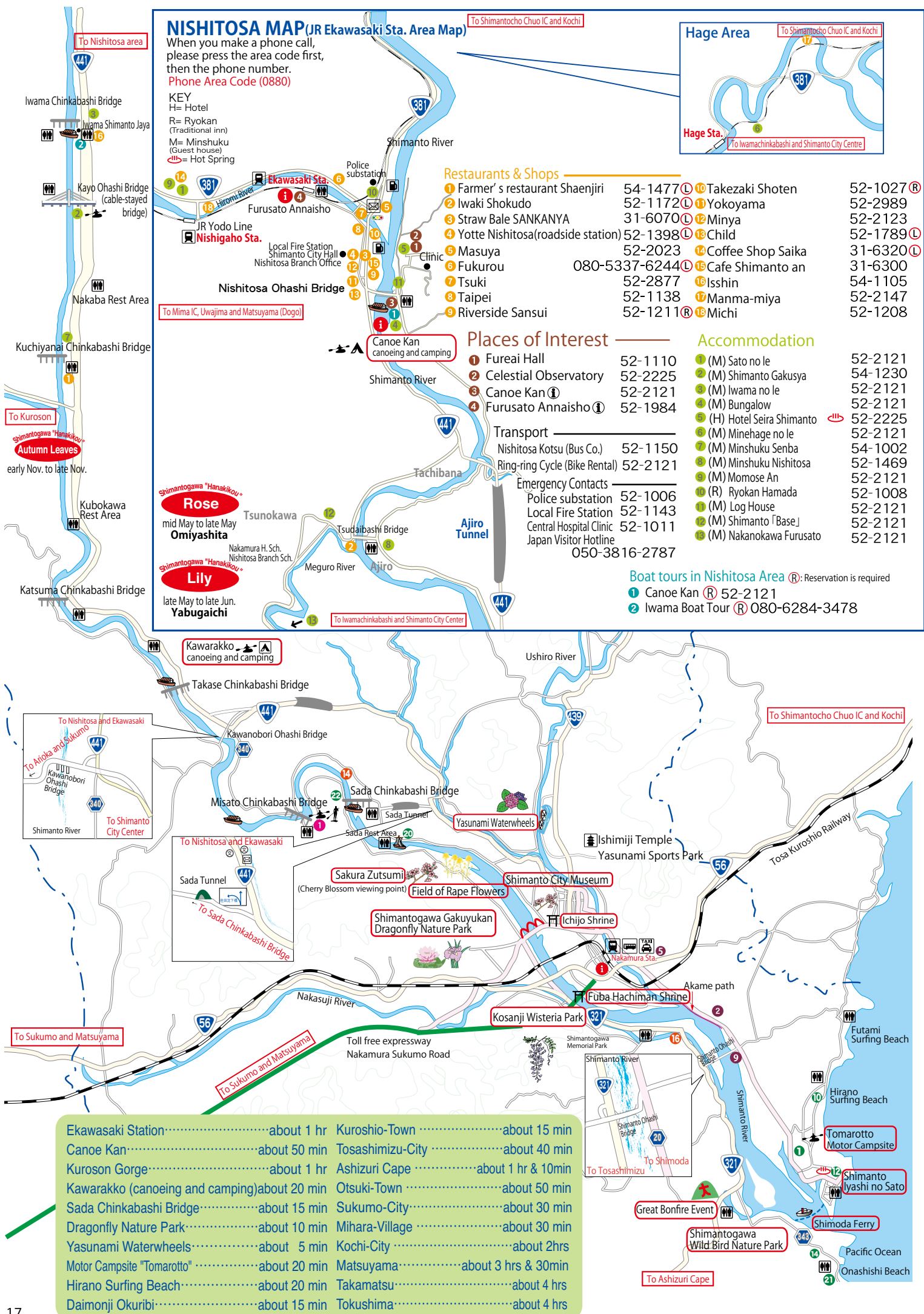
- Ushiro Shofudo  
Kayo Bussan (see next page)  
Zizake Sakagura Kotobukiya  
Hayashi Katsubushi-ten  
Taisakusan honpo Fujiya (see next page)

- 34-6161  
35-2380  
35-2531  
34-7333  
34-3533

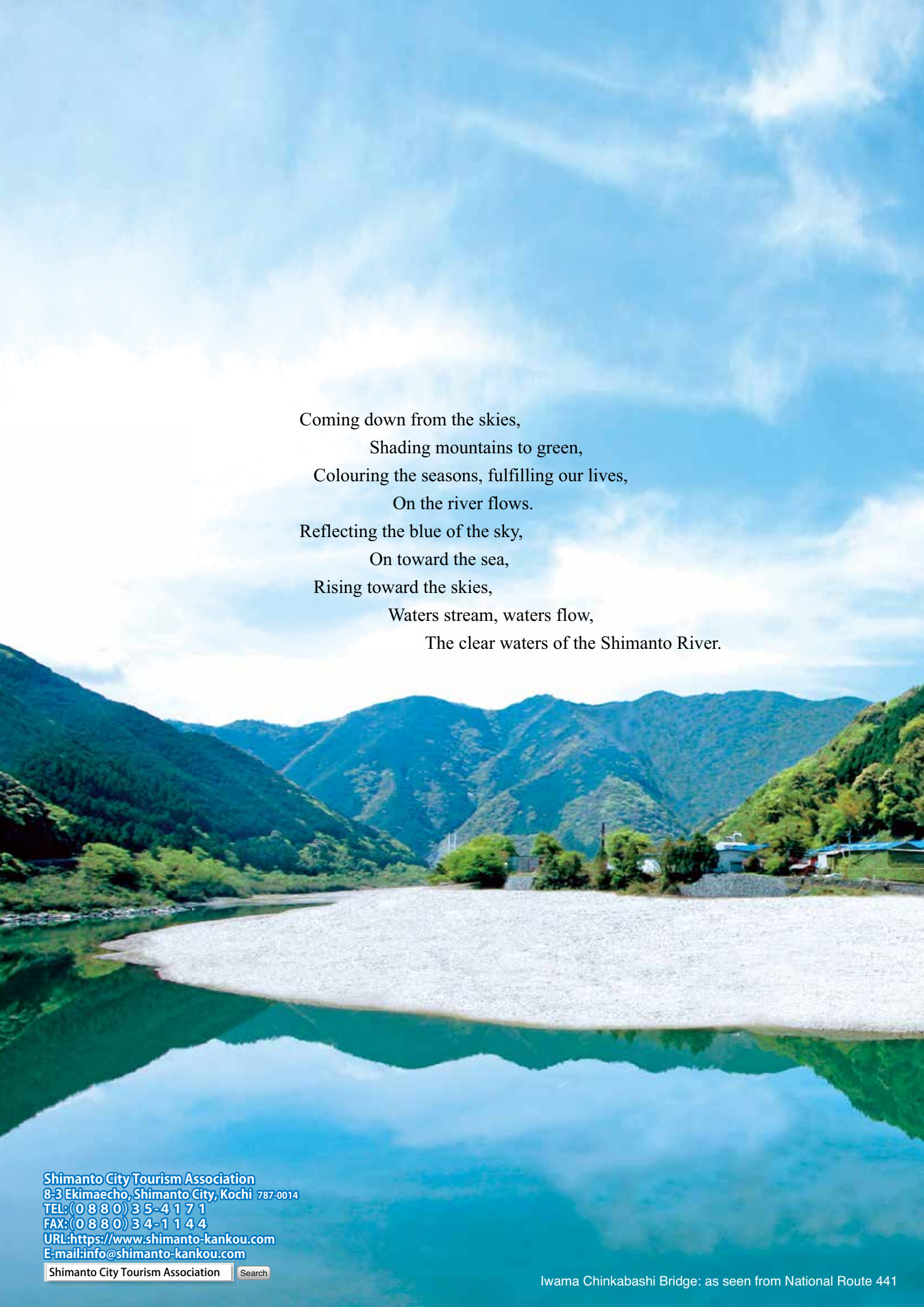
- Bussankan Sunriver Shimanto  
Maruban Shoyu  
Nakamura Station Kiosk  
Irodori Ichiba (see next page)

published in August 2020









Coming down from the skies,  
Shading mountains to green,  
Colouring the seasons, fulfilling our lives,  
On the river flows.  
Reflecting the blue of the sky,  
On toward the sea,  
Rising toward the skies,  
Waters stream, waters flow,  
The clear waters of the Shimanto River.