

Chill out in Shimanto

Explore, Relax, and Enjoy.



Welcomed by the breeze of Kochi,
my heart gently unwinds amid the emerald mountains.

Breathing in the crisp air, surrendering to the murmuring river,
yesterday's world feels far away.

A spontaneous stop, a quiet breath of relief.
With its local flavors and the warmth of its people, Shimanto becomes a part of me.

"I'll come again to this place that fills my soul."

*Chill out
in
Shimanto*

Dive deeper into the charm!

The flow of Shimanto

Dip in and
feel the connection.

Take the plunge and
indulge all five senses.

Immerse yourself and
become captivated by Shimanto.



- P.03~ Tourist Attractions
- P.07~ Activities
- P.09~ Gourmet Food
- P.13~ Festivals
- P.15~ History & Events
- P.17~ Hot Springs & Camping
- P.19~ Souvenirs
- P.21~ Model Courses & Travel Information
- P.23~ Tourist Map
- P.25~ The City Connected by a River





Relax and take it in

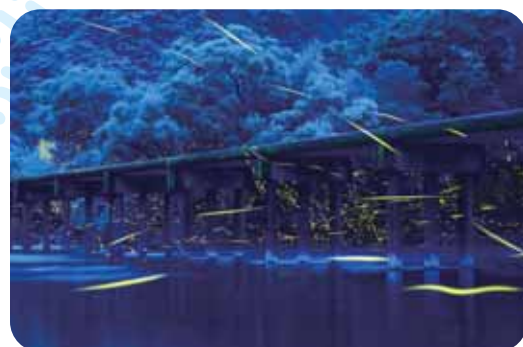
Immerse Yourself
in the Stunning Scenery



DIP image_movie

Shimanto Stroll

The Shimanto River is Japan's last naturally flowing river. Discover the best scenic spots to enjoy the river's breathtaking views. Relax and unwind while embracing nature.



Enjoy the magical sight of fireflies from late May to early June. The shimmering fireflies reflected on the water and the submersible bridges create an unforgettable sight.

The enchanting
Shimanto River...!



Talking with
the boatman!



A graceful moment with the breeze
and the sound of water

Sightseeing Boat Tours

Experience the charm of the Shimanto River while enjoying its scenic beauty. Private boat tours and meal-inclusive cruises are available with reservations. Group bookings are also available. Enjoy the feeling of being close enough to touch the water.

map f-6



Enjoy a special "bento"
while admiring
the Shimanto River!

Check here for information on boat tours!

There are several tour
operators,
each offering different
boarding locations and
meal options.



Boat Tour
Information



Iwama Submersible Bridge

A bridge without railings, blending into the scenery

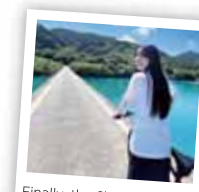
Submersible Bridge

The submersible bridges of the Shimanto River are a must-see attraction and offer unique scenery during each season. The majestic river and its bridges create a perfect setting for stunning photographs. Let yourself be carried away by the murmuring river and the whispering wind, and feel at one with nature.

map e-2 e-4 e-5 f-6



Submersible Bridge
Information



Finally, the Shimanto River!

There are **48** submersible bridges in total,
spanning both the main and tributary streams
of the river.



Katsuma Submersible Bridge



Misato Submersible Bridge



Hage Submersible Bridge



Takase Submersible Bridge



Sada Submersible Bridge

These iconic bridges,
featured in TV dramas,
make for fantastic photo spots!



This area is also known
as a habitat for the fairy pitta,
the prefectural bird of Kochi!

A hidden gem of Shimanto,
wrapped in serenity

Kuroson Gorge



A tributary of the Shimanto River, the Kuroson River has been selected as one of Japan's 100 best waterways and is said to be the clearest in the Shimanto River system. The area around Shinden Bridge in Kuroson Gorge is a prime spot for viewing autumn foliage. You can also step down to the riverbank and admire the stunning autumn leaves from the water's edge.



map b-3

Location Shinden Bridge

Best time for autumn foliage: Mid to late November



Especially stunning when the wisteria bloom



A perfect spot for hiking and forest enjoyment

Kosanji Temple Wisteria Park

A public park developed around the Kosanji Temple mountain area.

The park features playground equipment for children and historic sites, including Kosanji Temple, associated with the Buddhist monk Kobo Daishi. Around 20 varieties of wisteria are in peak bloom from mid to late April.

map g-7

974-1 Sakamoto, Shimanto City, Kochi Prefecture

Opening Hours:

[March 16 – September 30] 9:00 – 19:00

[October 1 – March 15] 9:00 – 16:30



A serene view of the town from the hilltop

Play Freely, Play to Your Heart's Content



A seaside park for all ages

Tosa Seinan Great Park Gymnasium (Nakamura Area)

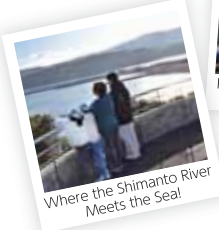
Surrounded by vast nature, this park is a popular destination for families. Locally known as "Shimoda Park," its spacious grassy areas are perfect for picnics and sports. Seasonal flowers add vibrant colors to the park, offering new discoveries on every visit. Walking trails are also well maintained.

map h-8

Location 3548 Shimoda, Shimanto City, Kochi Prefecture



Plenty of Play Equipment for Endless Fun!



Where the Shimanto River Meets the Sea!



The World's First Dragonfly Sanctuary! Dragonfly Nature Park

As the world's first dragonfly protected area, this park is home to around 81 species of dragonflies including the rare Neakayoshi dragonfly (Neaka yoshiyanma), the most diverse in Japan.

The walking trails allow visitors to enjoy over 700 species of seasonal plants in this lush, green nature park. The park also features the Shimantogawa Gakuyukan (nicknamed "Akisui-o"), an interactive museum where visitors can enjoy games and quizzes using global insect specimens and fish exhibits.

map g-7

0880-37-4110

Location 8055-5 Gudō, Shimanto City, Kochi Prefecture



Official Website

Home to About 180 Species of Fish!



Mr. Sugimura from The Dragonfly Nature Park

Dragonflies, fish, plants—there's so much to see! Feel free to ask anything.



The Elusive Giant Fish "Akame" is Also on Display!



A Sky Full of Stars Seen from the Submersible Bridge



The Nishitosa area, designated as a "Starry Town" by the former Environment Agency, is a natural planetarium!



Shimanto Celestial Observatory

A professional stargazing guide, the "Seisho Attendant," introduces seasonal constellations and celestial objects, using the 360mm reflecting telescope "Shimanto Star" inside the observatory dome.

map e-2 0880-52-2225 (Hotel Seira Shimanto)

Location 1101-5 Mochii, Nishitosa, Shimanto City, Kochi Prefecture

A Journey Through the Seasons

Beautiful Flower Spots "Shimantogawa Hanakikou"



Canola Flowers

map g-7

[Nyuta Willow Forest]
Late February – Mid-March



Cherry Blossoms

map g-7

[Tamematsu Park / Sakurazutsumi Park]
Late March – Early April



Wisteria

map g-7

[Kosanji Temple]
Mid – Late April



Water Lilies

map g-7

[Dragonfly Nature Park]
Early May – Mid-October



Roses

map d-3

[Nishitosa Omiya-shimo]
Mid – Late May



Lilies

map d-3

[Nishitosa Yabugaichi]
Late May – Late June



Iris Flowers

map g-7

[Dragonfly Nature Park]
Late May – Early June



Hydrangeas

map g-6

[Yasunami Waterwheel Village]
Late May – Mid-June



Red Spider Lilies

map g-7

[Nyuta Willow Forest]
Late September – Early October



Autumn Leaves

map b-3

[Kuroson Gorge]
Mid – Late November



Flower Spots Info



Enjoy nature to the fullest!

Experience the Great Outdoors!

Activities

Discover activities that let you fully immerse yourself in nature!

From canoeing and SUP to BBQs, enjoy a variety of outdoor activities while taking in the beauty of the changing seasons and refreshing both your mind and body.



Splash
image_movie



Canoeing

Feel the majesty of the Shimanto River on the water

Canoeing Experience

Canoeing is the signature activity of the Shimanto River!

Let yourself drift along the gentle currents of the pristine river, leaving behind the hustle and bustle of daily life.

The reflection of the changing seasons on the water and the soothing sound of the river bring peace to your soul. Guided tours are available for beginners to enjoy with confidence. Perfect for families, friends, or even solo adventurers!



Canoeing Info



SUP

A graceful glide on the Shimanto River SUP Experience

One of the most popular river activities, stand-up paddleboarding(SUP).

Glide down the river as if taking a walk on water! Try tandem or group SUP boards for a fun experience with friends and family.

Explore at your own pace

Rental Bicycles



Nakamura Area



Nishitosa Area

Cycling along the Shimanto River on a rental bike is a great way to enjoy the breeze. Surrounded by the sounds of nature, a leisurely ride along the river brings you closer to the local way of life.

You might even spot shrimp traps submerged in the river or local fishermen at work. It's also a convenient way to reach the submersible bridges and various sightseeing spots in the city, please feel free to ask about this.

In addition to mountain bikes, electric bikes and tandem bicycles are available. (Scan the QR code for details.)

Cycling



BBQ



Enjoy a special riverside BBQ!

BBQ by the River

At campsites near the Shimanto River, you can enjoy a BBQ with a scenic river view. BBQ after playing in the Shimanto River might taste even better than usual!

(See page 18 for more info)



A sightseeing boat may pass by during your BBQ!



BBQ with a view of the Shimanto River!



Michi-no-eki
Yotte Nishi-Tosa
Mr. Kawai

Shimanto River BBQ Project

At Michi-no-Eki (roadside rest area) Yotte Nishitosa and Hotel Seira Shimanto, enjoy an authentic BBQ with fresh local ingredients while gazing at the Shimanto River.

(Reservation required.)

No need to bring anything or be an expert—just relax and savor the natural bounty of Nishitosa, Shimanto City.

map d-3



Official Website

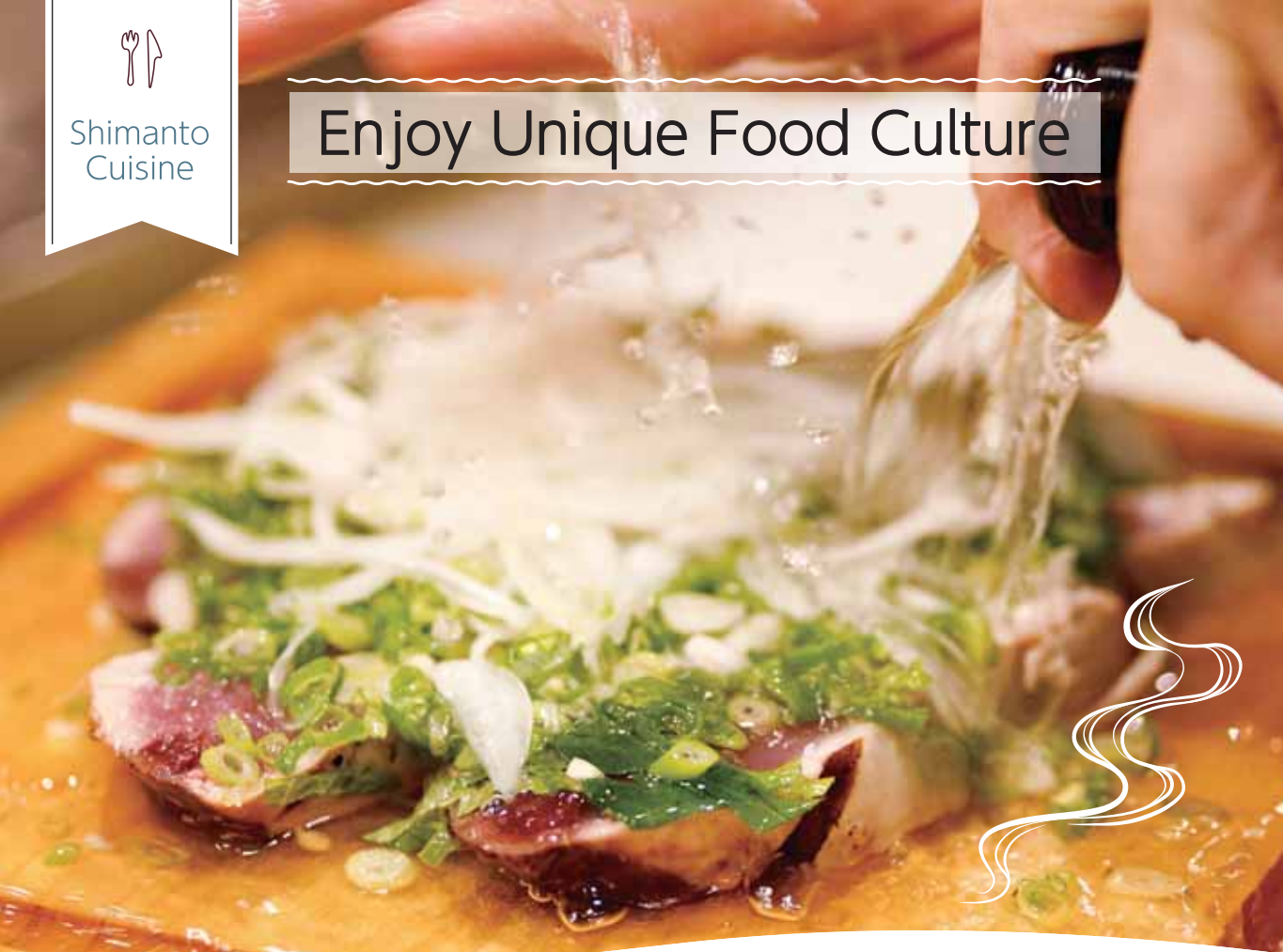
Splash





Shimanto
Cuisine

Enjoy Unique Food Culture



In Shimanto City, people say, "Everything here is delicious!" Blessed with mountains, rivers, and the sea, Shimanto offers an abundance of fresh local ingredients, from river and sea fish to vegetables and edible wild plants. The city center is home to many restaurants, where chefs carefully craft unique dishes using seasonal ingredients. Both locals and visitors gather here, creating a lively atmosphere. Feel free to ask the friendly chef, "What's today's special?"



Through a deep respect for seasonal flavors, you'll discover the character of Shimanto and the warmth of its people.



Restaurant Info



Splash
image movie

Cheers!



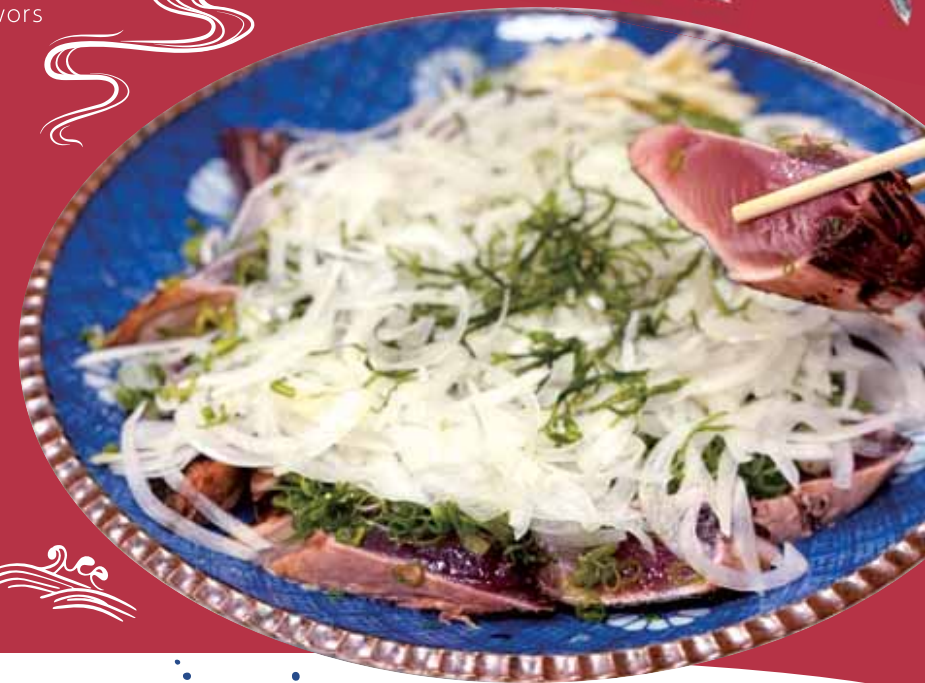
Nakamura's Salt-Seared Bonito

season From March – May, September – November

This traditional salt-seared bonito, found only in Nakamura, is a local favorite at gatherings, seasoned with salt, vinegar, and citrus juice. Each restaurant has its own unique recipe—enjoy the special flavors crafted with skill and tradition.



"Our tatakai is something special!"



Shimanto Bushukan Citrus

season From Mid-July – October

Bushukan is a citrus fruit deeply rooted in Shimanto's food culture, known as the "king of Citrus vinegar." Its distinctive aroma and refreshing acidity make it an essential ingredient in Shimanto cuisine.



Bushukan and young bonito
—a perfect match!

Freshly caught young bonito in summer and autumn—squeeze bushukan over it for a burst of flavor. This is a true taste of Shimanto's food heritage.



Shimanto City's
Special Ambassador,
Bushumaro-kun

Buchu-Hi (Bushukan Citrus Chu-Hi)

A popular local Chu-Hi made with fresh bushukan juice. Its crisp acidity and refreshing citrus aroma make it a favorite.

Pair it with Nakamura's salt-seared bonito.
Cheers with a Buchu-Hi!
Say "cheers" with a Buchu-Hi!



Splash





Wild Ayu (sweetfish)

season From June – October, December – January

Wild ayu from the Shimanto River have a rich taste, earning them the title of "fragrant fish."

Grilled Ayu



Wild Eel

season From April – September

Wild eel caught using traditional fishing methods. Thick, tender eel grilled over charcoal, with crispy skin and firm, juicy flesh.

Grilled Eel (kabayaki)



River Shrimp

season From April – August

The Shimanto River is home to three types of river shrimp, with some growing up to 10cm long. They can be enjoyed whole, either deep-fried or grilled with salt.

Deep-fried River Shrimp



Aosa Seaweed

season From February – May

Aosa seaweed has a rich, airy flavor that expands in your mouth. It can be eaten as tempura or added to soups.

Aosa Seaweed Tempura



Biligatsuo

season From March – May, September – November

Ultra fresh bonito caught within a few hours ago! Its amazing tenderness and chewy texture is truly addictive.

Biligatsuo Sashimi (ultra fresh raw bonito)



Try wild eel for the first time!



A generous serving of Shimanto's "gori"!



There's even more!

Shimanto Ingredients



Shimanto Beef

Black-haired Wagyu cattle are raised in the Nishitosa area. Only about 100 cows are shipped annually—this rare beef has a succulent, melt-in-your-mouth texture.



Bei Nasu (American Eggplant)

season From June – October

American eggplant, beloved locally, is commonly grown in Nishitosa's fields. It's recommended to enjoy it as dengaku (grilled with miso) or fried.



Succulent flavor and juicy texture

Rice

Shimanto City is a major rice-producing area in the western part of Kochi Prefecture. There are various regional rice brands, such as "Shimanto Farming Rice" and "Mountain Rice," grown in different areas.



Edible wild Plants

Edible wild plants like itadori (Japanese knotweed) and warabi (bracken), which sprout in spring, are essential in traditional local dishes.



Chestnuts

season From September – October

The Shimanto River basin has long been known for chestnut production, with large, sweet chestnuts being a hallmark.



Yuzu

season From October – November

Yuzu grown with fresh air and clean water—there are many products made from yuzu.



Aonori Seaweed

season From January – May, December

The Shimanto River is one of Japan's top sources of natural Suji aonori (green laver). Dried aonori is sold as a popular souvenir.



Kawarakko Market, Mrs. Nishio

Country-style Sushi

Local country style sushi uses grilled fish mixed with the vinegared rice. Sushi rolled with tamagoyaki (Japanese omelette) and rolled sushi with kelp are traditional rural flavors.



Gori

season From March – May

Gori refers to juvenile species of freshwater gobies, such as "numachichibu". It's famous as "tsukudani" (a preserved side dish) and in dishes like gori on rice.



Local Shimanto Sake

The local sake made from mountain-grown rice and spring water from the Shimanto River is exceptional.

Tsugani Crab

season From August – October

The rich taste of the crab's miso (innards) is exquisite. Tsugani crab soup and "gane miso," a local dish, are cherished autumn delicacies.



Splash

The "Shimanto City Festival", a Celebration of "Little Kyoto", Nakamura



Splash
image_movie

Shimanto Firework's Display

The finale of the festival season is a spectacular fireworks display. Music and fireworks combine as colorful fireworks light up the sky. The fireworks, vividly reflected on the surface of the Shimanto River, called "Japan's last pristine river," are a magical sight.

Date The Last Saturday of August
Location Shimanto River Festival Square
map g-7

Shimanto
City
Festival

Nakamura Dance & Shimanto Lantern Float Parade

The festival features dancing and the Lantern Float Festival with opportunities for community participation. The lantern floats, lit up with lights, parade through the town with a majestic performance by each participating group-a sight worth seeing.

Date The last Saturday of July
Location Shimanto City Center
map g-7

Shimanto
City
Festival

All Japan Spider Sumo Tournament

The Spider Sumo Tournament is held every first Saturday of August at Ichijo Shrine, creating lasting summer memories for children. This traditional event is held only in Nakamura, Shimanto City, and Kajiki Town, Kagoshima Prefecture.

Date The first Saturday of August
Location Ichijo Shrine
map g-7



Shimanto
City
Festival

The Yosakoi Festival in Shimanto City

Dancers dressed in dazzling costumes perform throughout the city. The finale at Tenjinbashi Arcade features all the teams joining in a lively dance, unique to Yosakoi Shimanto.

Date Mid-September
Location Nakamura Station, Fuba Hachiman Shrine, Higashishitamachi Shopping Street, Tenjinbashi Arcade, and more
map g-7

Nakamura's
Festival



Delicious Street Food

Enjoy delicious dishes and local crafts made with the rich blessings of the mountains and rivers in Nishitosa. Explore the shopping street and taste all the local specialties.

Date Late October
Location Naro Shopping Street (For more details, please inquire)
☎0880-52-1113 Shimanto City Office Industrial and Construction Division
map d-3

Nishitosa's
Festival



Autumn Festival in Hage

The ritual begins with a bull deity (ushioni) leading the procession, purifying the road, followed by residents in traditional attire crossing the Hage Submersible Bridge, and offering a dance. At Hage Tenmangu Shrine, local residents and elementary school children perform the Itsushika Dance and Hana-Tori Dance, wishing for a good harvest.

Date November 8 **Location** Hage Tenmangu Shrine
map e-2

Nishitosa's
Festival



Autumn Leaves Festival in Kuroson Gorge

Held in Kuroson Gorge during the autumn foliage season, this festival celebrates the beauty of nature. Surrounded by stunning landscapes, fun events and autumn delicacies, experiencing the gifts of nature with all your senses.

Date Mid-November
Location Kuroson Shinsui Park
map b-3

Nishitosa's
Festival



Splash



Unraveling the depths of history

The Story of "Little Kyoto"

The Town of Ichijo, Nakamura

In Shimanto City (formerly Nakamura), Norifusa Ichijo, the former regent, moved here in 1468 after the Onin War devastated Kyoto, bringing Kyoto's culture to the town. The Tosa Ichijo family flourished for over 100 years, until they were driven out to Bungo by Motochika Chosokabe in 1574. During the feudal era, Kazutoyo Yamauchi's brother, Yasutoyo, governed, and later owned a territory of 30,000 Koku (a medium sized domain). More than 550 years later, the people of Nakamura continue to honor their heritage, preserving the town's culture and traditions as "the Town of Ichijo." Shimanto City (formerly Nakamura) with its rich history is known as "the Little Kyoto of Tosa."

Although the city's appearance has changed due to floods, fires, and earthquakes, the grid-like streets and place names such as Gion, Kyo-machi, Kamogawa, and Higashiyama reflect the town's deep historical connection to Kyoto.



Deep Dive image movie



Historical Info



Shimanto Cityscape



Fusaie Ichijo

Ichijo Shrine

Shrine

Ichijo Shrine, built in the Edo period in memory of Norifusa Ichijo, is a symbol of "Little Kyoto of Tosa." Norifusa Ichijo founded the Tosa Ichijo family here, leaving a lasting impact on the region's history. Located in the town center, it is easily accessible from the local shopping streets. The Ichijo Grand Festival, held every autumn, is affectionately called "Ichijoko-san" and attracts many visitors.

map g-7 ☎0880-35-2436

Location 1-11 Nakamura Honmachi, Shimanto City, Kochi Prefecture

Fuba Hachimangu Shrine

Shrine

Built in the Bunmei Period (1469-1487), Fuba Hachimangu Shrine was founded by the Ichijo family after bringing the deity from Kyoto's Iwashimizu Hachimangu Shrine to protect the Hata region. Its architecture, including the main hall with a gabled roof covered in cedar bark, is reminiscent of the Muromachi period. It is the oldest surviving shrine architecture in the prefecture.

map g-7 ☎0880-35-2839

Location 1374-1 Fuba, Shimanto City, Kochi Prefecture



The main hall is an Important National Cultural Property

Shimanto City Folk Museum

(Nickname: Shirotto)

The museum, shaped like a castle, is located in a corner of the Nakamura Castle ruins (Tamematsu Park). From the top floor, designed like a keep, you can look out over the Shimanto River, Higashiyama, and the entire town. Inside, the museum presents the town's life, history, and culture, emphasizing its relationship with the Shimanto River, "A Town Living with the River." The museum displays various local historical documents and artworks, showcasing the region's heritage. Tamematsu Park is also known as a famous cherry blossom viewing spot.



map g-7

☎0880-35-4096

Location 2356 Nakamura, Tamematsu Park, Shimanto City, Kochi Prefecture



Official Character Shirotto-kun

Tosa Ichijo Court Procession, Wisteria Festival

The Tosa Ichijo Court Procession reenacts the arrival of Norifusa Ichijo in 1468, when he left Kyoto and moved to the Hata district in Nakamura. Modeled after the Aoi Festival's court procession in Kyoto, about 100 participants dressed in Muromachi-period costumes march through the city.

Date May 3

Location City Center, Ichijo Shrine

map g-7



The splendor of the Middle Ages reborn, like a painted scroll

Experience the tradition and charm of "Little Kyoto" Nakamura

Ichijo Grand Festival



The Ichijo Grand Festival, which began in the late Edo period in 1862, commemorates the founding of the shrine's main hall. Starting with the "Goshin Fire Reception Ceremony" where a sacred flame from Kamo Mioya Shrine (Shimogamo Shrine) in Kyoto is brought to Ichijo Shrine, the festival is filled with elegant events like lantern parades, children's processions, and "kagura" (sacred dances), attracting many visitors. The sacred flame continues to burn as a bonfire at Ichijo Shrine for three days and nights.

Date November 22-24

Location City Center, Ichijo Shrine

map g-7



Evening Festival Lantern Parade



Children's Procession



Fuba Hachimangu Shrine Grand Festival

The Fuba Hachiman Shrine Grand Festival is famous for the "Divine Wedding Ceremony" involving the palanquins of the male and female deities. After the male deity's palanquin parades through the streets, it meets the female deity's palanquin at the shrine for a "palanquin uniting" ceremony. The divine wedding ceremony, introduced by Norifusa Ichijo to discourage practices like abduction marriage, is a rare and unique ritual in Japan.

Date Mid-September

Location Fuba Hachimangu Shrine

map g-7



Daimonji Okuribi (Great Bonfire)

The Daimonji Okuribi, held in the Masaki district of the lower Shimanto River, is a traditional bonfire event. The large "Dai" (big) character, 25 m², floats in the darkness, marking the end of summer in "Little Kyoto", Nakamura.

Date Old Lunar Calendar: July 16

Location Masaki District

map h-8

Deep Dive



Hotel Seira Shimanto

The women's bath features black marble, while the men's bath is made of regular marble. The women's bath includes a mist sauna that helps promote sweating by efficiently transferring heat to your body. The men's bath features a dry sauna that improves circulation and boosts metabolism for a refreshing experience. At night, you can enjoy a stargazing experience at the adjacent Shimanto Celestial Observatory (details on P.6).

map e-3 ☎0880-52-2225

Location 1100 Mochii, Nishitosa, Shimanto City, Kochi Prefecture



Sample Cuisine



Official Website



Enjoy the breathtaking views as you unwind



Relax in Shimanto Healing Hot Spring Journey

Relax in the soft, natural hot springs, surrounded by Shimanto's beauty, and enjoy a peaceful soak that will soothe both your body and mind.



Sample Cuisine



Shimanto Iyashi no Sato

Nakamura

At "Shimanto Iyashi no Yu," You can enjoy a variety of healing treatments, including natural hot springs, medicinal baths, saunas, and outdoor sea-water baths. The on-site restaurant offers delicious Shimanto cuisine, featuring delicacies from the mountain, river, and sea.

map h-8

☎0880-31-5111

Location 3363 Shimoda, Shimanto City, Kochi Prefecture



Official Website

Take your time!

Charming accommodation with warm hospitality

From comfortable hotels to traditional inns and cozy guesthouses, Shimanto offers a variety of accommodation suited to your travel needs and style. Enjoy a heartwarming stay with exceptional hospitality.



Accommodation Info



TIP!

There are various campsites in stunning locations along the Shimanto River and near the sea! You can experience activities like canoeing, SUP, and BBQ.



Shimanto River "Station" Canoe House



Solo camping or family BBQs under the starry sky are also popular!

A river-view automobile campsite overlooking the Shimanto River is complete with kitchen sites with sinks and hot water. At night, enjoy the breathtaking starlit sky, designated as a "Starry Town" by the former Environment Agency. Families, friends, and solo campers are all welcome.

map e-3

☎0880-52-2121

Location 1111-11 Mochii, Nishitosa, Shimanto City, Kochi Prefecture



Official Website

Director: Mr. Tanabe

Accommodation	Campsite with parking	Open camping area	Cabins, etc.
Activities	Canoeing	SUP	
Facilities & Services	Hot Showers	Wifi/AC *1	Rafting

*1 AC power available only on Campsite with parking.



Shimanto Canoe and Camping Village Kawarakko



Relax at a campsite by the Shimanto River, surrounded by the great outdoors.

This is an outdoor facility surrounded by rich nature along the Shimanto River. There are 26 campsites and cabins, with restrooms, showers, a laundromat, and an array of camping gear rental available.

map d-4

☎0880-31-8400

Location 24 Tadenokawa, Shimanto City, Kochi Prefecture



Official Website



Director: Mr. Taniguchi

Accommodation	Campsite with parking	Open camping area	Cabins, etc.
Activities	Canoeing	Tandem SUP	Mega SUP
Facilities & Services	Hot Showers	Wifi/AC *1	

*1 AC power available only on A sites.

Stay in the Great Outdoors

Campsites



Stay and play at the school

Shimanto Gakusha



This accommodation is a former school. You can stay in classrooms, the infirmary, the broadcasting room, or the principal's office. In addition to activities like canoeing, creek walking (waterfall climbing), and wooden rafting, you can also enjoy fishing while relaxing by the Shimanto River.

map e-4

☎0880-54-1230

Location 408-1 Nakaba, Nishitosa, Shimanto City, Kochi Prefecture



Official Website

Facility Director: Mr. Aratama

Accommodation	School Building Stay
Activities	Canoeing River Fishing Creek Walking
Facilities & Services	Bath Wifi/AC *1 Cafeteria *2

*1 AC power availability confirmed at booking.
*2 Available with accommodation plan.



Campsite with parking Tomarotto



This is a large campsite surrounded by the sea and mountains in Tosa Seinan Great Park, the largest in Shikoku. Enjoy panoramic views of the Pacific Ocean from a high vantage point. The facility is well-equipped, making it ideal for beginners to enjoy the outdoors.

map i-7

☎0880-33-0101

Location 3548 Shimoda, Shimanto City, Kochi Prefecture



Official Website



Director: Ms. Iwagami

Accommodation	Campsite with parking	Open camping area	Cabins, etc.
Activities	Sea Kayaking	Coastal Activities	
Facilities & Services	Hot Showers	Wifi/AC *1	Snacks and drinks *2

*1 AC power availability confirmed at booking.
*2 BBQ set Reservation required.

Deep Dive

Shimanto Souvenirs

River Bounty

Natural gifts from the Shimanto River, such as wild ayu (sweetfish), tsugani crab, and aromatic seaweed, make perfect souvenirs.

Come and visit!
There's plenty of
delicious food
here!

Something to bring back
for that special someone!

A Taste of Shimanto

Gifts from Shimanto,
blessed with abundant nature,
perfect for souvenirs.

Ayu Market - Micchan

Tennen ayu no shioyaki
(grilled wild sweetfish)

Nori tsukudani
(seaweed preserve)

Tsumaminori
(snack seaweed)

Shimantogawa tennen ayu no confit
(Shimanto sweetfish confit)

Tsugani
(Japanese Mitten Crab)

Aosa nori soup
(seaweed soup)

Alcohol
Drinks
Seasonings

Junmai ginjo genshu Shimanto no kaze
(undiluted sake)

Bu chu-hi base
(citrus flavor chu-hi concentrate)

Minya no ponzu
(citrus dressing)
Kazoku tare
(miso flavor BBQ Sauce)

Junmai ginjo shu, sankan mai
(quality sake brewed from the finest mountain rice)

Bushukan drink
(citrus drink)

Taipei ra-yu
(chili oil)

Bakatate
(BBQ sauce)

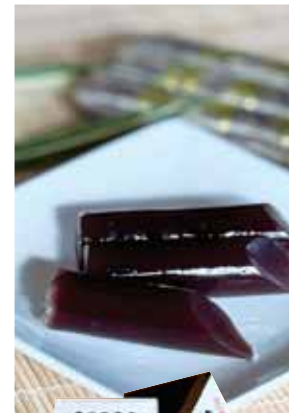
Shimanto Fru-Fru Dressing

Shimanto Sweets

Enjoy sweets that reflect the flavors of Shimanto, with simple, gentle sweetness from traditional Japanese confectioners and local specialty ingredients.



Taisaku san
(sweet bean cookies)



Ikada yokan
(sweet bean jelly)



Ichijo ko (sweet bean snack)



Shimanto monogatari
ichigo yokan
(strawberry sweet bean jelly)



Ayu (sweetfish shaped snack)



Aonori rusks (seaweed rusks)



Karinto (sweet fried dough)

*Please note that availability may vary by store.

Foods to try in Shimanto! Popular Sweets



Chocolate Parfait
Cafe n2



Coffee Jelly & Panna Cotta
Fleurir



Mahora Pudding
Cafe Mahora



Strawberry Tart
Uehara Confectionery



Chestnut Mont Blanc
Strawbale SANKANYA



Cream Puff
European Pastry Shop Amande



Florentines
Pastry Shop Fleurette



Strawberry red bean rice cake
Oishi Japanese sweet shop



Sightseeing Bus Information



Taxi Information

Plan 1 Walk around the Nakamura area Sightseeing Plan



Day 1

12:00 Boat Tour and Sada Chinkabashi

Have lunch on a boat while cruising along the river. As you peacefully drift along the Shimanto River, it's time to satisfy both your heart and your hunger!

For more details, see P3



14:30 Shimanto City Museum

For more details, see P15

Explore the lifestyle, history, and culture of the Shimanto River region in this castle-style museum located at the Nakamura Castle ruins! Imagine the feeling of being a castle lord while taking in the panoramic view of the city from the keep's observation deck!



(Nickname: Shirotto)

18:00 Japanese pub crawl

Taste Shimanto's cuisine by hopping between "izakayas" for a delightful pub crawl! Savor local specialties and delicious drinks to lift your spirits!



Cheers!
Sampling delicious food is the true joy of traveling!

21:00 Hotel Stay

For more details, see P17

Relax and unwind at a hotel in the city center.



Day 2

12:00 Explore Tenjinbashi Shopping Street

For more details, see P15

A nostalgic, friendly shopping street. Warm interaction with shop owners is one of the joys of traveling. Dropping in at a local store will warm your heart!



The excitement of finding hidden treasures awaits!

17:00 Dragonfly Nature Park

(Shimanto River Gakuyukan)

For more details, see P5

Take a stroll through the spacious grounds anytime of the year. At the near by Shimanto River Gakuyukan, you'll find a variety of fish species from the Shimanto River and other parts of the world, plus many insect specimens! It will surely fill you with nostalgia!



Circulating tour bus is the best option for transportation.

Plan 2 Outdoors in Nishitosa Activity Plan



Day 1

11:00 Authentic BBQ by the riverside

For more details, see P8

Unwind with a pre-prepared BBQ at Michi-no-Eki Yotte Nishitosa! After experiencing an authentic BBQ with a cooking guide, head to the Canoe House by rental bike!



Enjoy your own BBQ!

12:50 Canoe House

For more details, see P18

Kayaking and SUP for everyone, even beginners! Let the current of the Shimanto River carry you along as you soak up its natural beauty. With experienced river guides leading the way, you can kick back and relax!



17:00 Stay at Hotel Seira Shimanto

For more details, see P17

After savoring delicious dishes made from seasonal ingredients, relax in the hot springs. Be amazed by the starry sky at the adjacent Shimanto Celestial Observatory!



Day 2

9:00 Cycling

For more details, see P8

Rent a bike and explore Nishitosa to your heart's content. Explore the vast wilderness at your own pace!



Chill out along the Shimanto River

11:00 Yotte Nishitosa Michi-no-Eki (roadside station)

For more details, see P22

Experience fresh local produce and specialties on the terrace! SANKANYA next door is known for its sweets made from local ingredients. At Ayu Market, you can try the salt-grilled wild sweetfish from the Shimanto River, in addition to many other products!



The Shimanto River bus is the best option for transportation.



Town Route Sightseeing loop bus

It is convenient to use the sightseeing loop bus that takes you around the city, Sada Chinkabashi, and other places of interest. For just 500 yen, you can hop on and off four buses in one day and check out the local hot spots.

[Days of service] Saturdays・Sundays・Public Holidays (excluding New Year)・Golden Week, and the whole of August (including Japanese summer vacation).

[Fee] ¥500/Day (half price for elementary school students, free for infants)

[Inquiries] Kochi Seinan Transportation ☎ 0880-34-6221



Shimanto River Route Shimanto River Round Trip Bus

A sightseeing bus that makes one round trip daily between the Nakamura and Nishitosa areas, with great scenery to enjoy along the serene Shimanto River. You can also stop at the submersible bridges, and combine the trip with activities like boat tours and canoeing (additional fees and reservations required).

[Days of service] Saturdays・Sundays・Public Holidays (excluding New Year)・Golden Week, and the whole of August (including Japanese summer vacation).

[Fee] ¥1,000~/Day (prices vary depending on the course; half price for elementary school students, free for infants)

[Inquiries] Kochi Seinan Transportation ☎ 0880-34-1266



Shimanto & Ashizuri Route Shimanto-Ashizuri-go

The Shimanto and Ashizuri areas are rich in nature, and preserve the traditional lifestyles and landscapes that reflect timeless Japan. Explore the Shimanto River by boat, take a guided tour of Cape Ashizuri, visit the stunning Kashiwajima Island, and wander around the cultural town of Sukumo: some of the highlights of western Kochi.

[Days of service] Saturdays・Sundays・Public Holidays (March-November)・Japanese Spring Vacation (the second half of March)・Golden Week・Japanese Summer Vacation (end of June-August).

[Fee] ¥1,500~ for a half-day tour (prices vary depending on the course; half price for elementary school students, free for infants)

[Inquiries] Kochi Seinan Transportation ☎ 0880-34-6221

Shimanto City Tourism Association

Nakamura

Located just outside Nakamura Station on the Tosa Kuroshio Railway! Feel free to ask about brochures, bike rentals, and any travel or sightseeing questions you may have.

Location 8-3 Ekimae Town, Shimanto City, Kochi Prefecture

☎0880-35-4171

[Open] 8:30 AM - 6:00 PM



Official Website

Yotte Nishitosa Michi no Eki (Roadside station)

Nishitosa

A variety of Shimanto souvenirs and local specialties are available! Fresh seasonal vegetables are also on sale, and you can enjoy a meal at the eat-in area.

Location 2410-3 Egawasaki, Nishitosa, Shimanto City, Kochi Prefecture

☎0880-52-1398

[Open] 7:30 AM - 6:00 PM

[Closed] December - February・Tuesdays (except public holidays)



Official Website

Shimanto River Hometown Information Center

Nishitosa

Located inside JR Egawasaki Station, this information center is convenient for people using trains or buses.

Location 2232-3 Egawasaki, Nishitosa, Shimanto City, Kochi Prefecture (inside JR Egawasaki Station)

☎0880-52-1984

[Open] 8:30 AM - 6:00 PM

[Closed] Wednesdays (except Golden Week & Summer Vacation)・January 1-3



Official Website



Enjoy Sightseeing in Comfort Omotenashi Taxi

The drivers for this option have completed the "Omotenashi Taxi" training course, certified by the Kochi Prefecture Tourist Guide Taxi Program. Recommended sightseeing routes include submersible bridge hopping, the charming Ichijo Shrine, and the local history Museum, among other interesting options.



LOILOI Information

Walking Tour Guide LOILOI Shimanto

Take a wander through the historic town of "Little Kyoto" and discover its deeper charms with the LOILOI Shimanto walking tour guide.

"Loiloi" is a dialect from the Hata region meaning "to wander around."

Would you like to wander around Shimanto City with a guide?

Guides who hold Shimanto City dear, will warmly show you around..

●Apply

Shimanto City Tourism Association

☎0880-35-4171



Splash



Shimanto Chill out map



- Recommended Sightseeing Loop Bus Around Shimanto
- Shimanto River Round Trip Bus
- Sightseeing loop bus

All distances and time required are calculated from the Tourist Information Center (Shimanto City Tourism Association)

① Sakoya	8km 20min	① Sada Chinkabashi	8km 20min
② Shimanto no Ao	11km 25min	② Misato Chinkabashi	11km 25min
③ Nattoku	16km 30min	③ Katuma Chinkabashi	20km 35min
		④ Iwama Chinkabashi	33km 50min
		⑤ Hage Chinkabashi	45km 85min

- Tourist Information Center
- Tourist Facilities
- Experience Facilities
- Hot Spring Facilities
- Flower Spots
- Convenience Stores

Shimanto City Tourism Association
 To Shimanto City Tourism Association
 About 2 hours 30 minutes by car from Kochi Ryoma Airport
 About 1 hour 40 minutes by express train from JR Kochi Station



CityPromotion movie

Japan's Last Naturally Flowing River: The Shimanto River

The Shimanto River is the longest river in western Japan, stretching for about 196 kilometers. It winds and meanders through the mountains, eventually reaching the Pacific Ocean (Tosa Bay). This beautiful river is home to a plethora of wildlife, and the deep connection between the river and the people reinforces its status as Japan's last naturally flowing river. People have waded, swum, boated and fished in this river for centuries. The river has historically been a place for recreation, fishing, and transportation, supporting the livelihoods of those living alongside it. The town has developed with the people regarding the river as a moat to protect the castle like in Kyoto, and as a sacred place where gods and spirits could gather during festivals. The river has always played a central role in the town's history and culture. Shimanto City is truly a city that lives in harmony with the river.



A scene from the early Showa period, where people and goods were regularly transported by riverboats on the Shimanto River.



On the opening day of the ayu (sweetfish) fishing season in December, many anglers arrive at dawn. Visitors gather at the Akatekkyo Bridge (Red Iron Bridge) to observe their traditional fishing techniques, including the use of cast nets and rods.



Since the Meiji era, the "schoolchildren ferry" provided a vital transportation link across the river for students, operating in the morning and evening until the service ceased in 2002.



The Sada Chinkabashi, submerged during floods

The wisdom and ingenuity of our ancestors
Chinkabashi
(Submersible bridges)

A Chinkabashi is a bridge designed to be underwater when the water level is high, such as during typhoons. They have long been essential for the people of the area.



The ongoing relationship between the community and the river

The great Shimanto River is an integral part of daily life for local people. While the river provides for the people, they have learned to accept occasional floods as part of the cycle of nature. The Shimanto River has long been part of an ongoing relationship between the people and the river. This history and culture, like the eternal flow of the river, will continue to be passed down from generation to generation.



Cast Net Fishing



Torch Fishing



Aosanori (Green laver)



Pipe Trap Fishing



Fuba Hachimangu Shrine Annual Festival: "Mikoshi Washing" Ceremony



Iwama Tenmangu Summer Festival: wama Boat Parade



10 Million Canola flowers spanning the riverbank



The river is an ideal playground for children

Chill out in Shimanto



Shimanto City Office
Tourism and Commerce Division

4-10 Nakamura Ohashi-dori, Shimanto City, Kochi Prefecture
☎ 0880-34-1783

General Incorporated Association
Shimanto City Tourism Association

8-3 Ekimaecho, Shimanto City, Kochi Prefecture
☎ 0880-35-4171